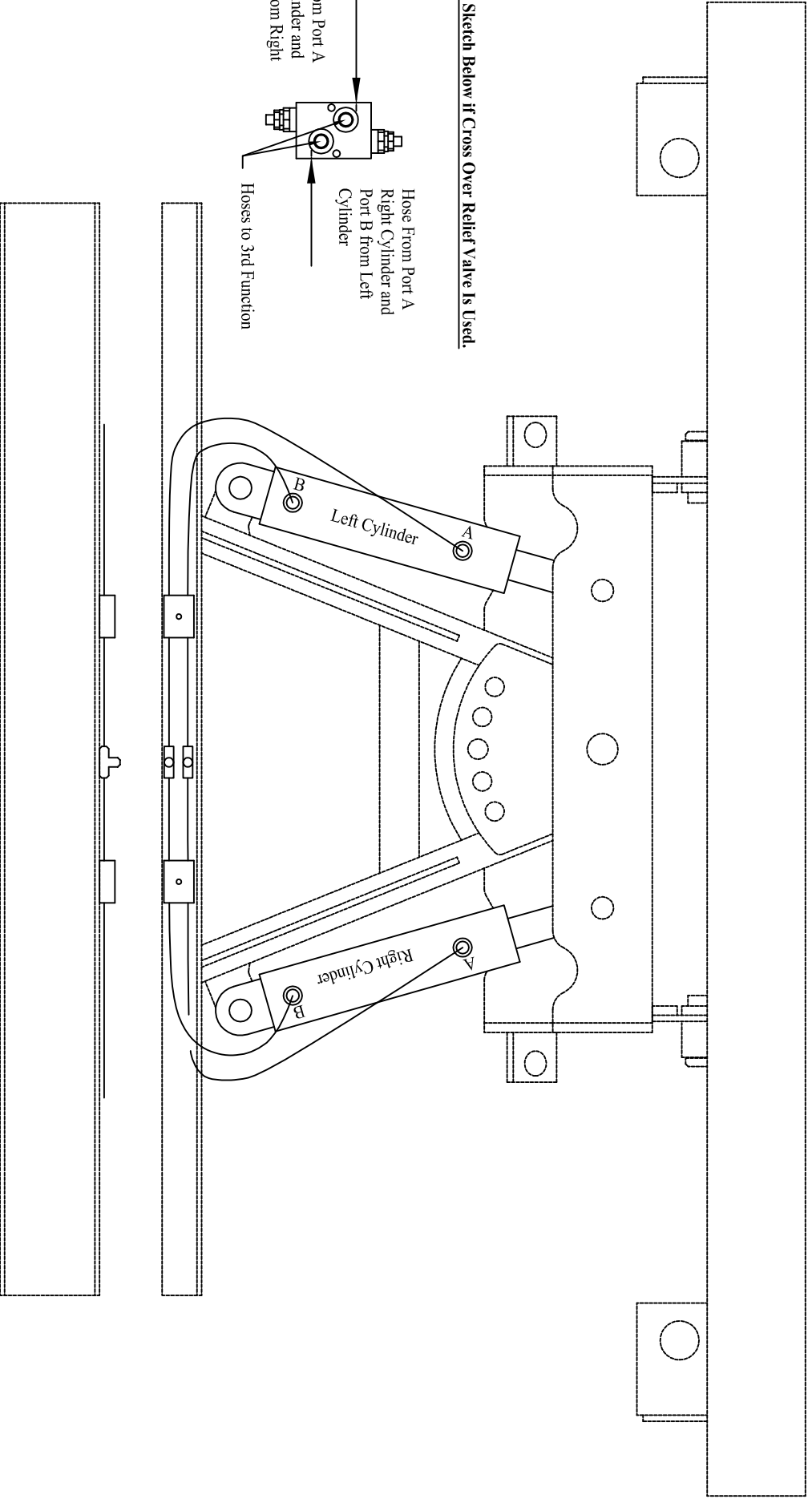


W R Long Hydraulic Kit for Front Blade

- 1.) Install the two Hydraulic Cylinders using the pins and bolts provided in the kit. The rod end of the cylinder goes inside the box and the cylinder end is connect to the back of the A-Frame. Make sure the hydraulic fittings are pointed up.
- 2.) Install the straight adaptors into the B ports of the hydraulic cylinders.
- 3.) Install two of the 90° adaptors onto the straight adaptors on the B ports of the hydraulic cylinders.
- 4.) Install the other two 90° adaptors to the A ports of the hydraulic cylinders.
- 5.) Connect one of the longer hoses to the A port of the right cylinder and the other end to one of the Tees; Connect one of the shorter hoses to the B port of the left cylinder and the other end to the Tee.
- 6.) Connect the other longer hose to the A port of the left cylinder and the other end to the other Tee. Connect the other shorter hose to the B port of the right cylinder and the other end of the Tee.
- 7.) Install the hose clamps inclosed to keep the hoses in position.



See Sketch Below if Cross Over Relief Valve Is Used.

