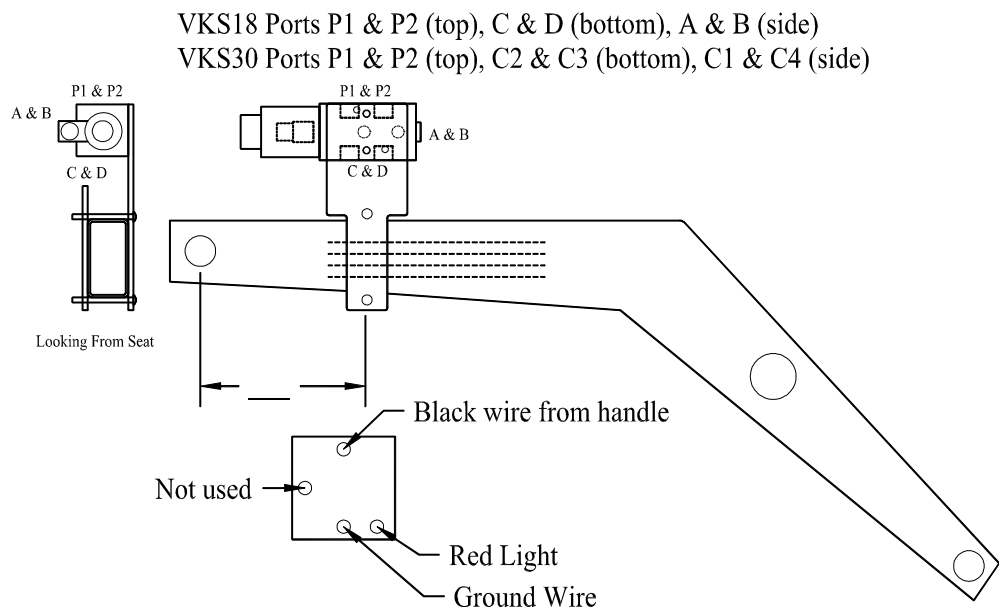


## Selector Valve Kit (VKS18 and VKS30) Instructions for

1. Please visit our Frequently Asked Questions (FAQ) page on our website. [www.wrlonginc.com](http://www.wrlonginc.com).
2. Mount the W R Long Selector Valve on the right loader arm so that the solenoid is pointing toward the back of the tractor. See sketch below.
3. Weld or bolt the bulk head bracket toward the right side of your torque tube. Make sure the quick connects point toward the back of the attachment.
4. On the left side of the right hand loader arm, there are four hoses that come from the loader valve and connect onto four steel tubes. Mark one of the two hoses and steel tubes that are associated with the loader lift cylinders, so that the oil flow can be reconnected properly after the hoses have been disconnected. Disconnect the two hoses from the two steel tubes that go to the loader lift cylinders. Reconnect the two hoses to the P1 & P2 ports (top) on the selector valve. Using the two shorter hoses provided in the kit connect one end to the steel tubes and the other end to the C&D or C2&C3 ports (bottom) on the selector valve so that the oil flow is the same as before. Connect the two long hoses to the A&B or C1&C4 (side) ports on the selector valve and connect the other end to the back of the bulkhead plate. Note: The VKS18 labels are A,B,C,&D. The VKS30 labels are C1,C2,C3,&C4.
5. Remove the knob from the joystick and install the W R Long handle with the red push button. Connect the red wire on the hand grip to a hot wire on the tractor using the 10 amp inline fuse.
6. See Below for valve wiring diagram.
7. If your tractor has a cab check to make sure that the selector valve or bracket does not hit the cab when the loader arm is all the way up.
8. Once installation is complete, verify that ALL fittings and hose connections are tight.

Carefully operate your new W. R. Long valve to check for leaks. Next, slowly operate your loader and attachment functions (up-down, dump-curl, open-close), through the full range of motion, to check for hose clearance or binding.



NOTE: This valve kit is designed to work off the power beyond port of your loader valve to operate hydraulic cylinders. Call for other applications. Please visit our FAQ webpage [www.wrlonginc.com](http://www.wrlonginc.com). W. R. Long Inc. 252-823-4570.